

Thank You Letter

Many thanks for purchasing this Powerflex Handling Package.

This selection of parts has been put together to give you the perfect combination of value versus performance and based on years of experience, we have selected what we feel are the products that are going to give you the best handling improvements for your vehicle whilst being mindful of cost.

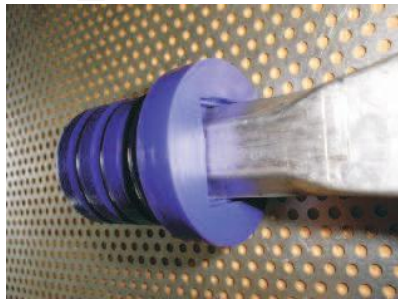
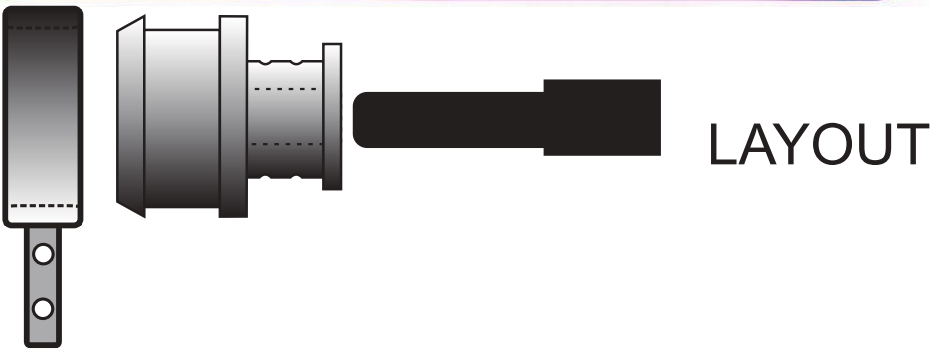
Your Powerflex Handling Package can be fitted to refresh the suspension feel of your vehicle or can be a great accompaniment to other suspension upgrades when preparing a vehicle for track driving.

Below is a listing of the parts included in this kit,

- PFF5-4601M3 - Front Wishbone Rear Bush
- PFR5-3608 - Rear Trailing Arm Bush
- PFR5-4610M3 - Rear Subframe Front Bush
- PFR5-4611 - Rear Subframe Rear Bush

We hope you enjoy the difference Powerflex suspension bushes make to your vehicle.

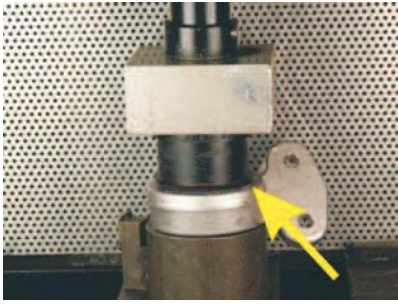




WITH CORRECT FITMENT METAL WASHER IN BUSH WILL SLIDE UP WISHBONE



CORRECT FITMENT, SPIGOT FLUSH WITH END OF BUSH. GREASE ALL AROUND OUTSIDE OF PURPLE BUSH.



FIT OUTER PART INTO HOUSING SQUARE WITH PRESS, TAPER END FIRST CHECK CORRECT WAY ROUND



APPLY WASHING UP LIQUID HERE

CORRECT ASSEMBLY



CORRECT FITMENT OF BUSHES INTO BRACKET.

SHOULD YOU EXPERIENCE ANY TECHNICAL DIFFICULTIES IN ANY WAY PLEASE CONTACT OUR TECHNICAL HOTLINE
(+44) 01895 460033
OR EMAIL
SALES@POWERFLEX.CO.UK



PART NUMBER

PFR5-4610M3

DESCRIPTION

REAR SUBFRAME FRONT BUSH LOWER HALF

INSTALLATION GUIDE

Contents (parts per pack):

2 x Polyurethane A Upper - Yellow Bushes
2 x Stainless Steel Sleeve

2 x Polyurethane M3 Lower - Purple Bushes
1 x Grease

Please read the complete fitting instructions and check package components before fitment.

These fitting instructions are to be used as a guide and in conjunction with workshop manual.

It is recommended that:

- all work to be carried out by a licensed technician;*
- all safety precautions adhered to;*
- wheel alignment to be checked and adjusted as required after any suspension work.*

All fasteners must be tensioned to manufacturer's torque settings.



Fitting Instructions:

1. Remove the original bushes from subframe.
2. Clean any dirt and corrosion from the bores in the subframe. Make sure to remove any sharp edges from the bore.
3. Fit polyurethane M3 Lower purple bushes into bores of the subframe on the bottom.
4. Fit polyurethane A yellow bushes into bores of the subframe on the topside.
5. Apply supplied grease into bore of the bush and around top faces.
6. Fit stainless steel sleeve into bushes.
7. Tension all hardware to manufacturers recommended torque settings.

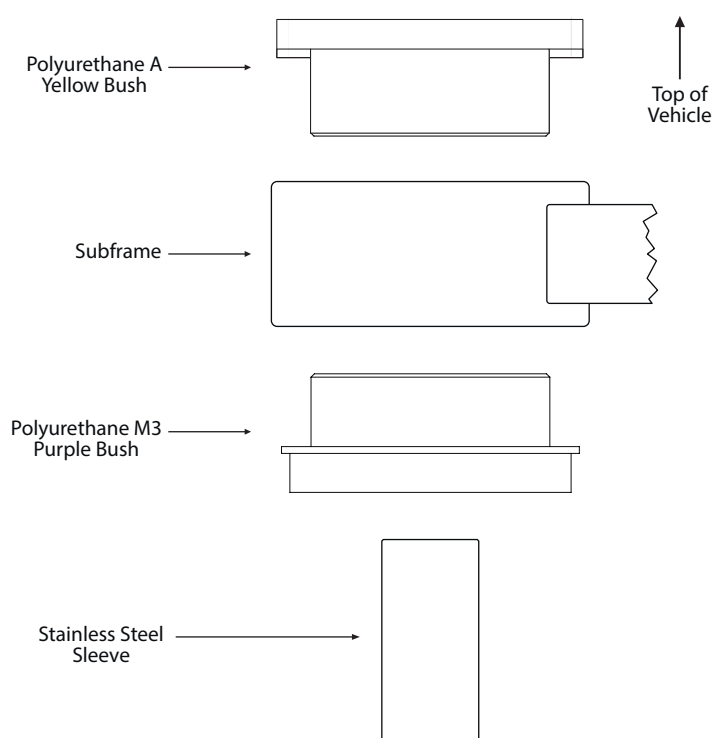


Figure 1: Exploded Assembly



PART NUMBER

PFR5-4611

DESCRIPTION

REAR SUBFRAME REAR BUSH

INSTALLATION GUIDE

Product description:

These bushes give a positive location of the rear sub frame, reducing movement at the rear end under cornering.

Contents (parts per pack):

2 x bushes (2 x A Upper parts & 2 x B Lower parts)

2 x metal sleeves

1 x grease

Please read the complete fitting instructions and check package components before fitment.

These fitting instructions are to be used as a guide and in conjunction with workshop manual.

It is recommended that:

- all work to be carried out by a licensed technician;

- all safety precautions adhered to;

- wheel alignment to be checked and adjusted as required after any suspension work.

All fasteners must be tensioned to manufacturer's torque settings.

Fitting Instructions:

1. Remove original bush. Clean sub frame of any rust and dirt.
2. Fit the upper part PFR5-4611A into the sub frame from the upper chassis side. (Also identified by a groove in the upper face)
3. Fit the lower part PFR5-4611B into the sub frame from the lower (road) side. (Also identified by a recess in the middle of the lower face)
4. Apply the supplied grease to the bore of the bush, the outside of the stainless steel sleeve and the upper and lower faces of the bush.
5. Push the stainless steel sleeve into the bush.
6. Refit using the original bolt and washer, tightening to manufactures recommended torque settings.

